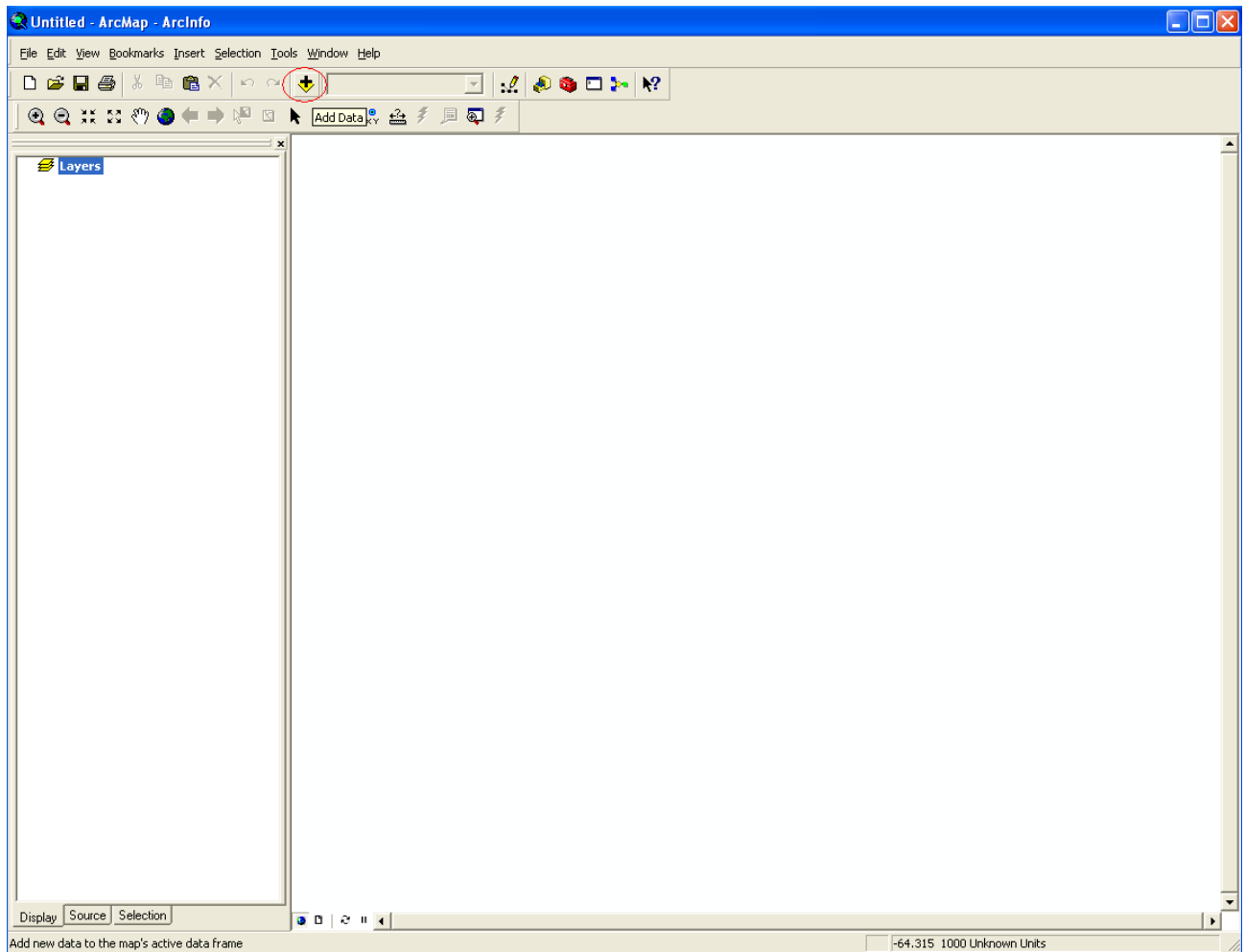
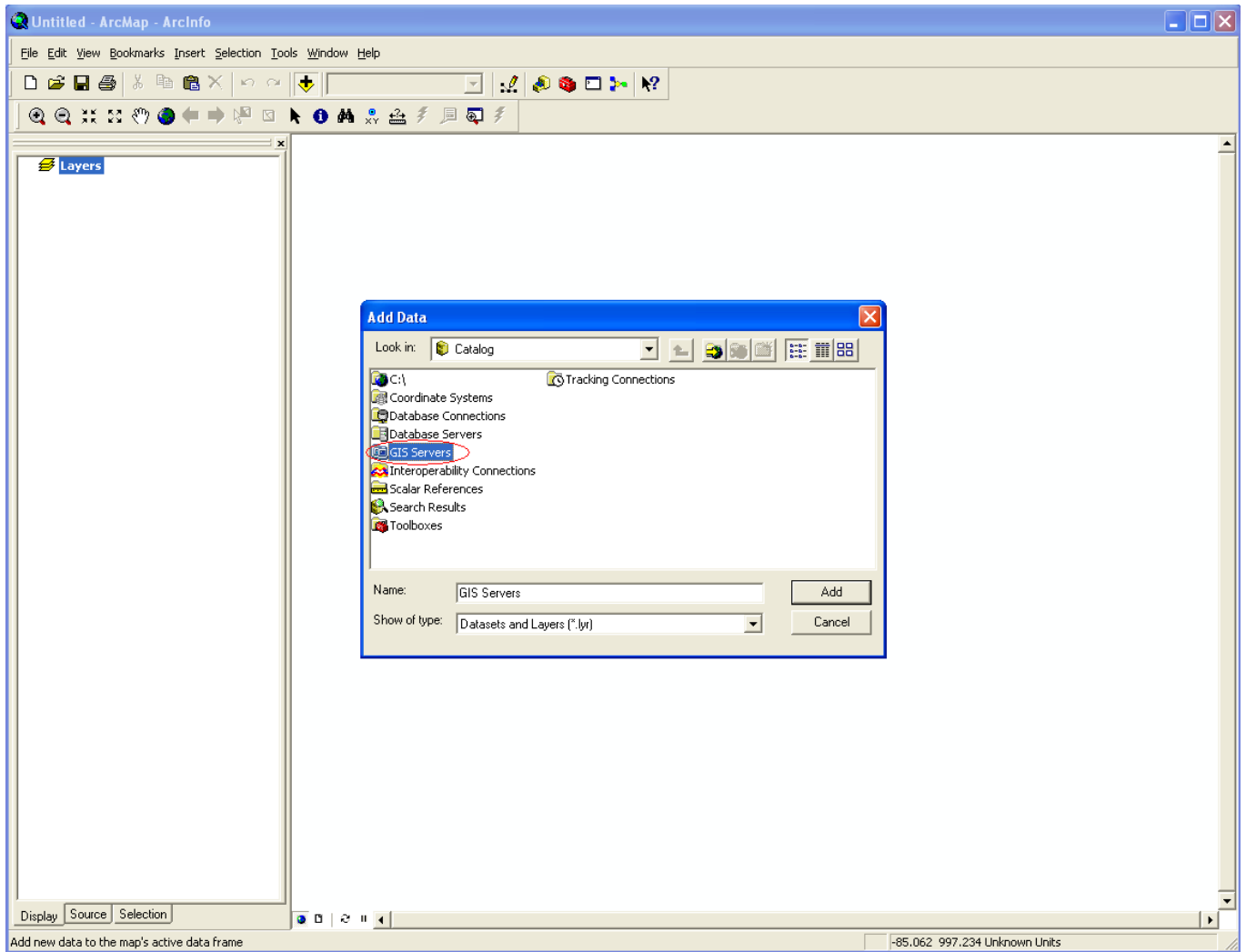


# How to connect to MSDIS image server

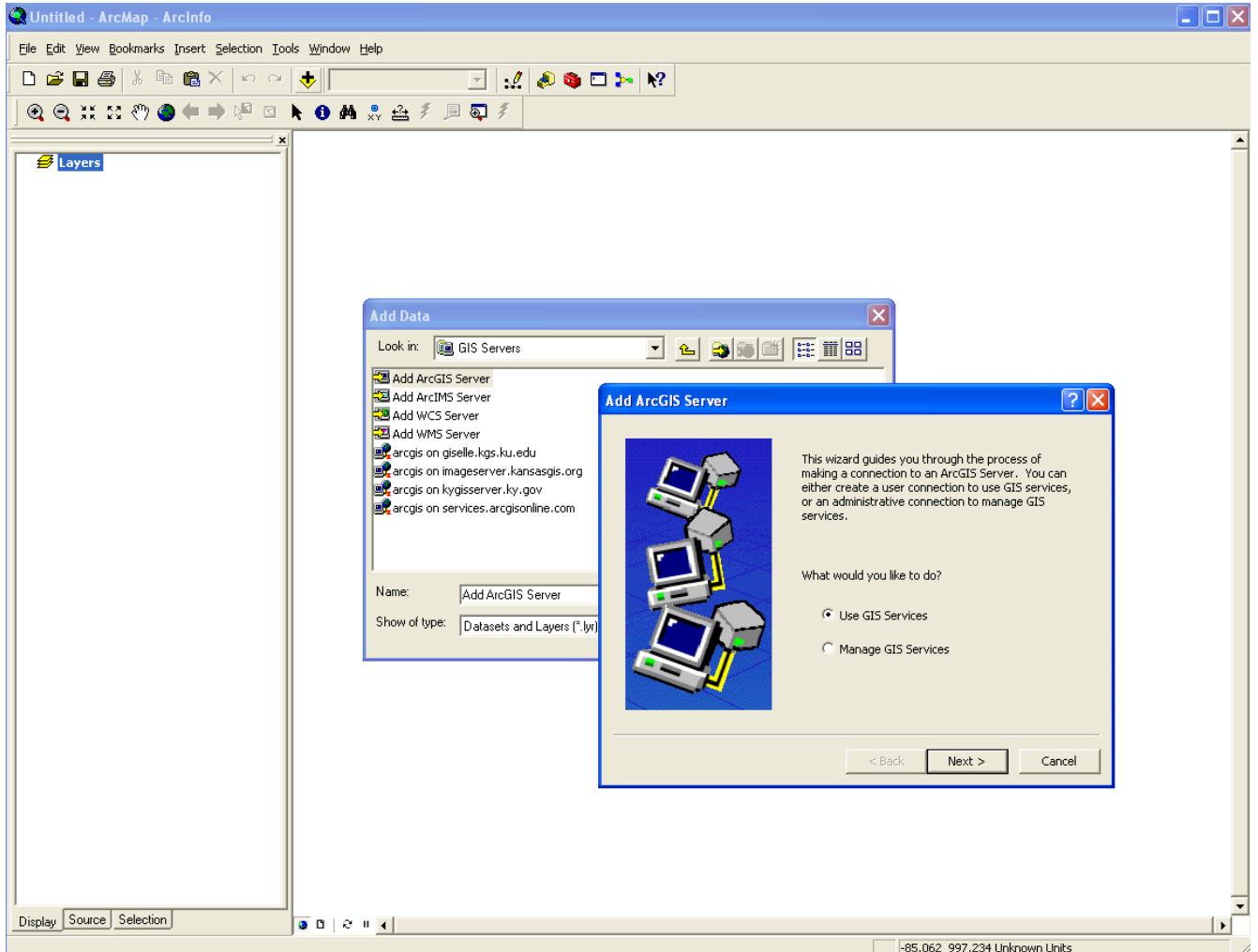
1. In ArcMAP, click “Add Data”.



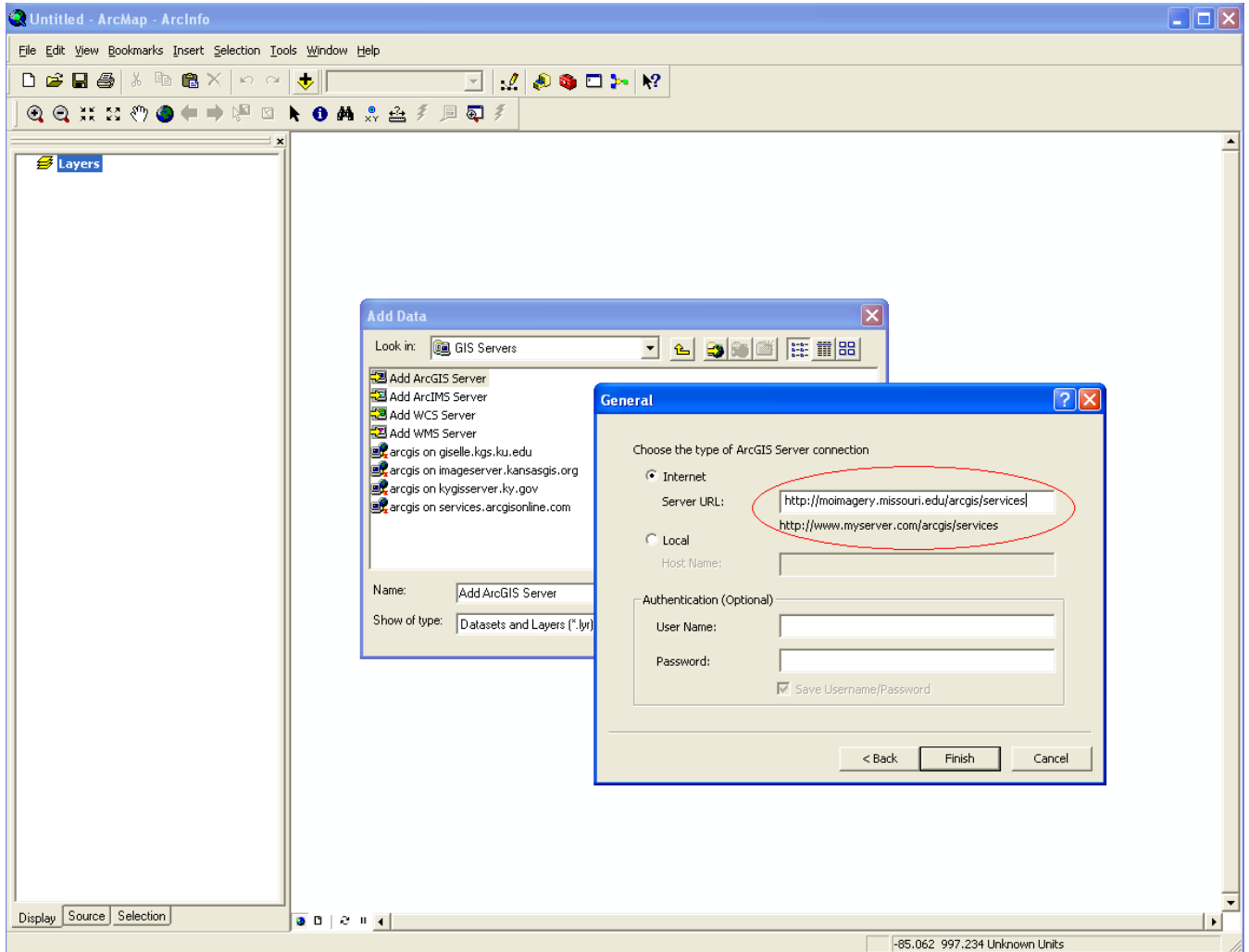
## 2. Scroll to "GIS Servers"



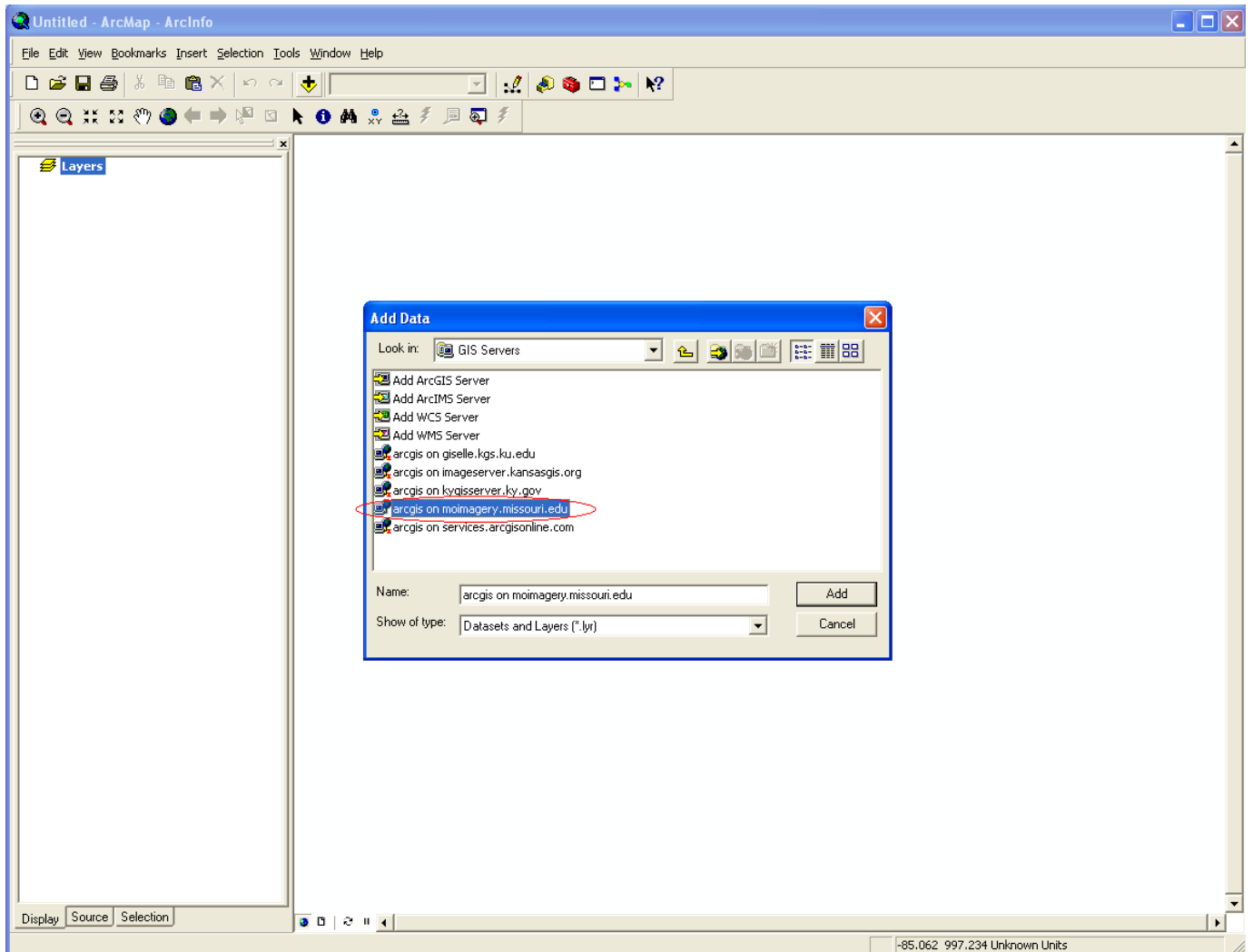
3. Click "Add ArcGIS Server", A new window will popup, choose "use GIS services" and click "next"



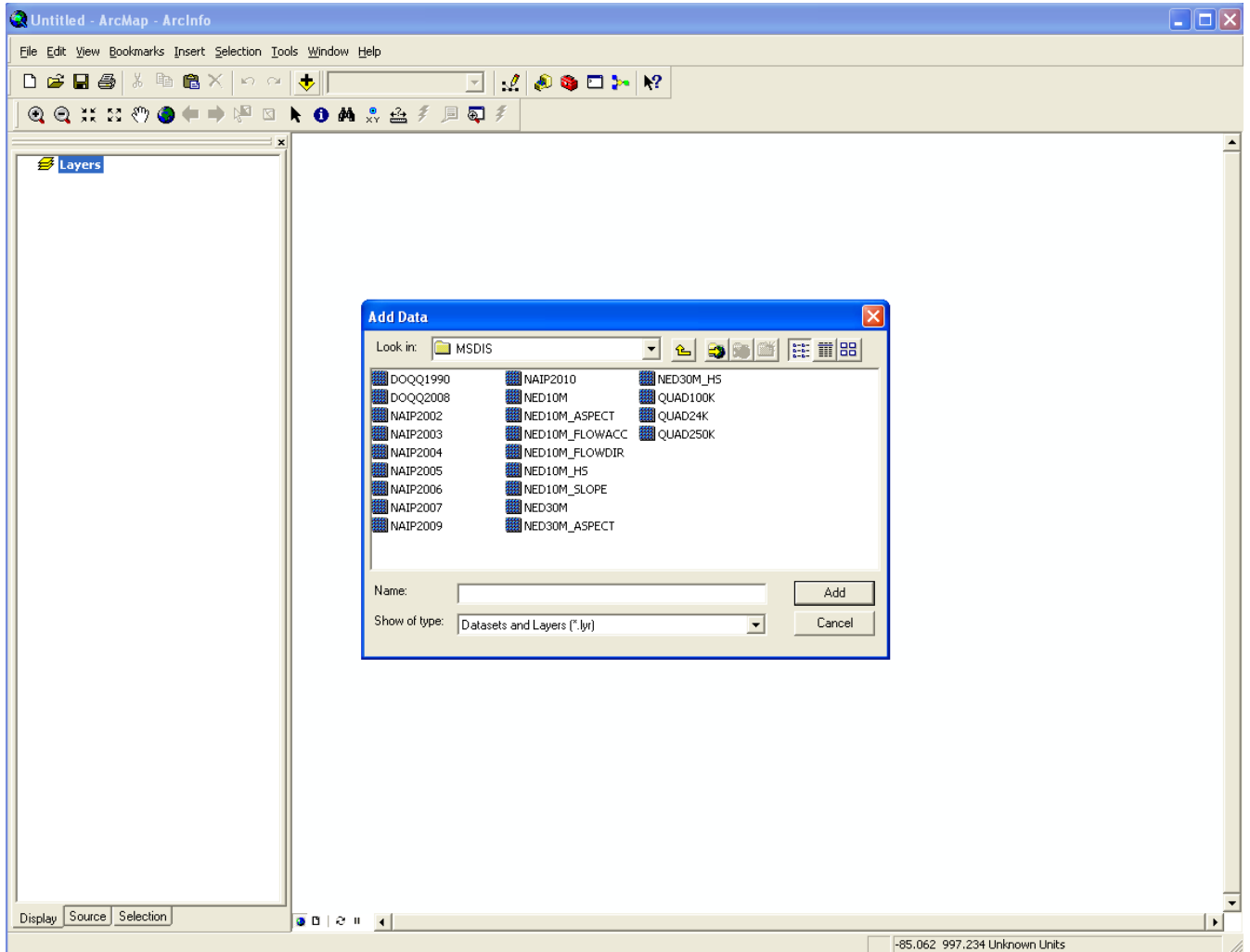
4. Enter <http://moimagery.missouri.edu/arcgis/services> in Server URL box.



5. Double click “arcgis on moimagery.missouri.edu”



6. Double click directory "MSDIS"



7. Select the service and add them to ArcMAP.

*(For ArcGIS 9.3 users, you may want to change the transmission compression to LZ77 in layer properties to have faster speed.)*

